

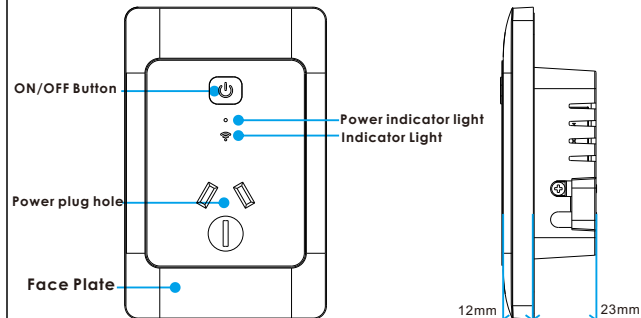


Single Smart Powerpoint User Guide

Model : CSH-SNGPPT

Notes Before Installation

1. Wi-Fi Only support a 2.4GHz network (802.11 b/g/n)
2. Must be installed by a licensed electrician.
3. ON/OFF Button also can be used as reset button, long press to reset your smart socket to factory defaults. Only do this if you are sure you want to erase all your settings



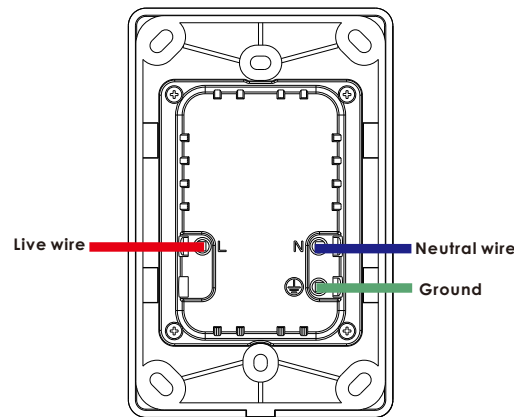
Specifications

Type	Single Smart Powerpoint
Model	CSH-SNGPPT
Power supply mode	Neutral+Live Wire
Rated Current	15A(Max)
Rated Voltage	AC100-240V~50/60Hz
Load Power	2500W(Max) Inductive Load < 2000W
Wireless Frequency	2.4GHZ
Wireless Standard	IEEE802.11 b/g/n
Product Size	116*75*35MM

Indicator light meaning

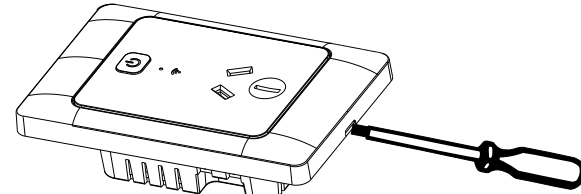
Indicator	Status	Description
Blue	Rapidly Blinks	Ready for connection (Default Mode Only)
Blue	Slowly Blinks (1 time every 3.5)	Ready for connection (AP Mode Only)
Green light is always on	Off	Turn the light off
Red light is always on	On	Turn the light on
Blue	Flash Slowly	No Internet

Step 1. Wiring Instructions

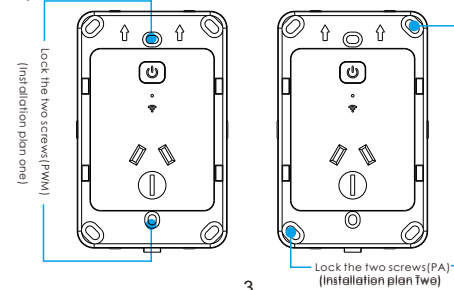


Safety Notice:
• Switch off the power before installation

Step 2. Using a small screwdriver to separate the upper and lower parts of the socket



Step 3. Screw the socket in the wall cassette and cover the face plate



Install the "Connect SmartHome" App

Step A .Find the "Connect SmartHome"app in Apple app store, Google Play, or scan the QR code below and install it.

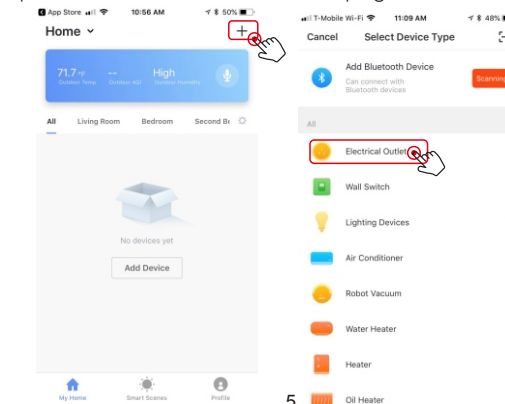


Step B .Register an account and follow the on-screen instructions.

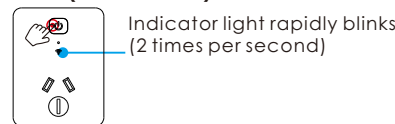
Step C: Add the Smart Powerpoint to the App.

Note: This smart socket can only support 2.4G network and cannot work with 5.0G network. please check if your home network is 2.4G and make sure that your phone has been connected to your WI-FI home network

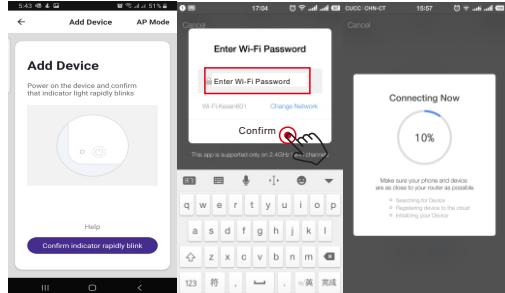
(1) Tap "+" button on top right corner to add device, the tap "Electrical Outlet" to enter next page.



Default Mode(Recommend)

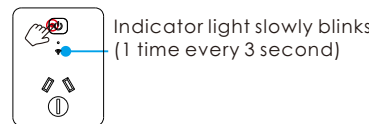


Step.1. Make sure the indicator blinks rapidly, if not, hold the ON/OFF button for 7 seconds for reset.

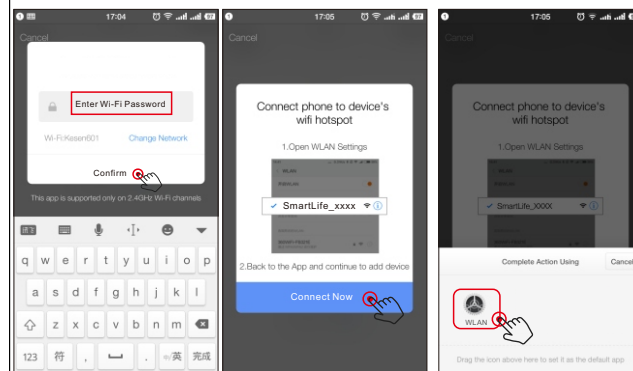
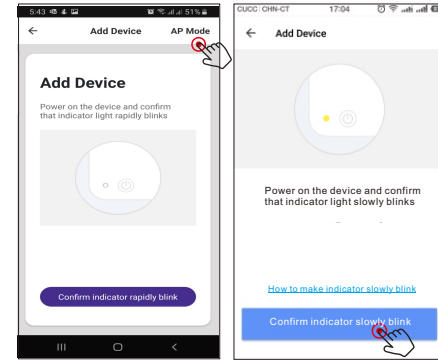


Note: When finished go to Step.9

AP Mode(Alternative)



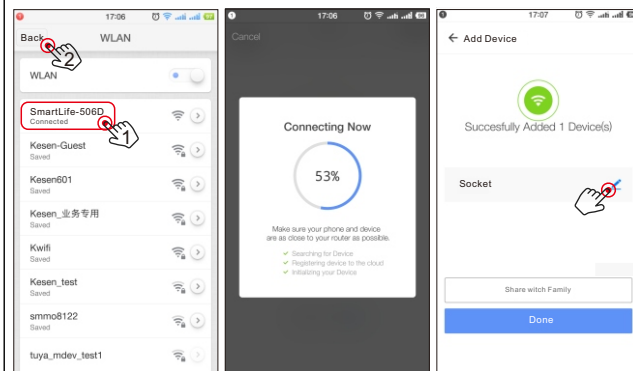
Step.1. When the indicator blinks rapidly, press and hold the ON/OFF button for another 7 seconds, the indicator will blink slowly.



Step.4

Step.5

Step.6



Step.7

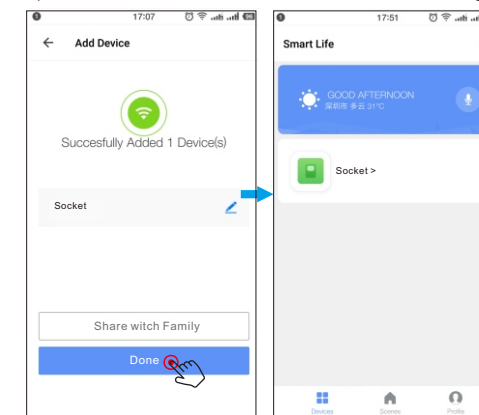
Step.8

Step.9

Modify socket name

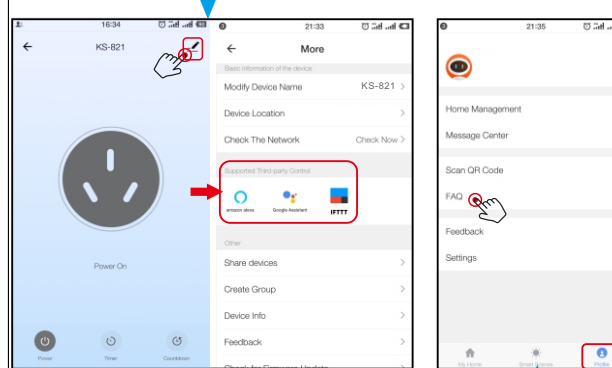
Step D: Give a name to the socket and tap "Done". you will find the device you've named is shown on the app home page. Tap the device to enter the setting page.

Note: The name you give to the device will be the name for voice control on Amazon Alexa or Google Home later. For example, the device is named "Socket" in this user guide.



10

If you want to connect to Amazon Alexa, Google Home, IFTTT control, please follow the instructions to find the guide in the app.



If you have any questions, please check the FAQ in the app, maybe you can find a solution

11